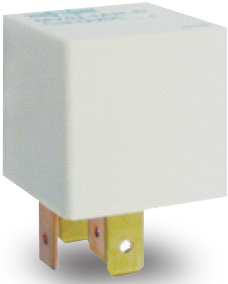
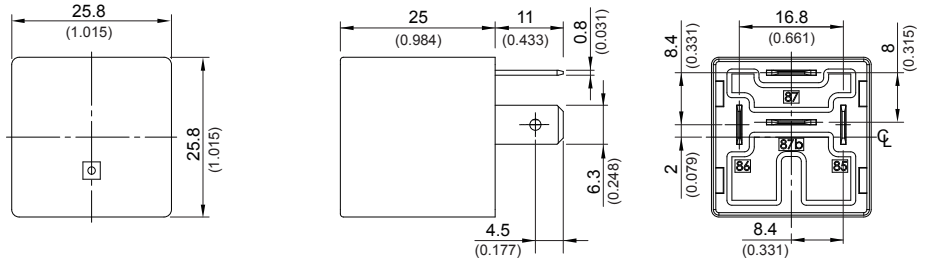


# MV002 Series

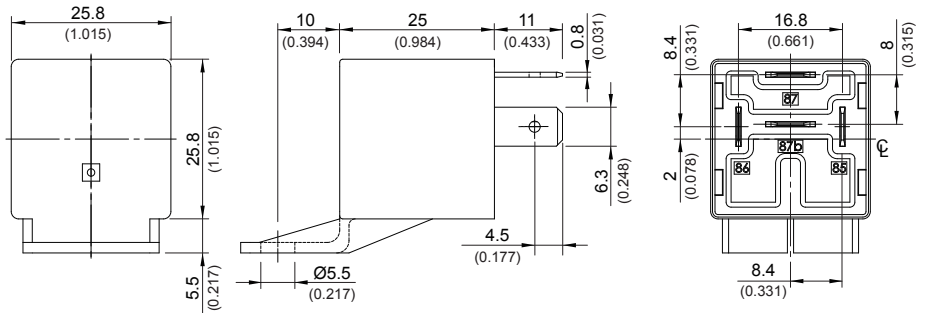


## Outline Dimensions

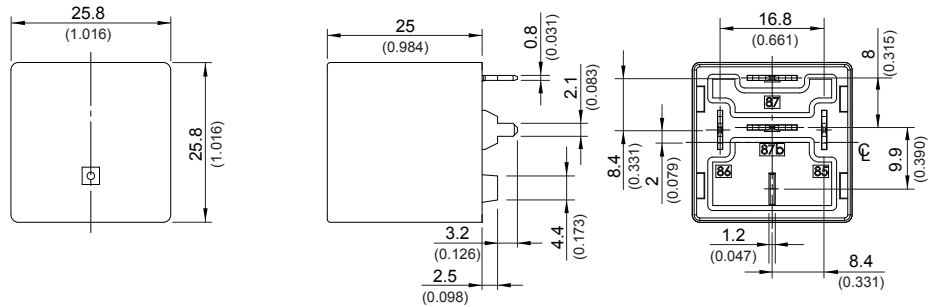
### ◆ MV002 , MV002H (-C,D,S cover)



### ◆ MV002 , MV002H (-C1,D1,S1 cover)

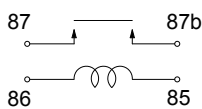


### ◆ MV002P , MV002HP (-C,D,S cover)

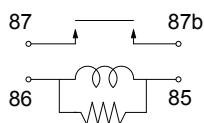


TOLERANCE:  
 LESS THAN: 1(0.039) ±0.1(0.004)  
 5(0.197) ±0.3(0.012)  
 20(0.787) ±0.5(0.020)  
 MORE THAN: 20(0.787) ±1(0.039)

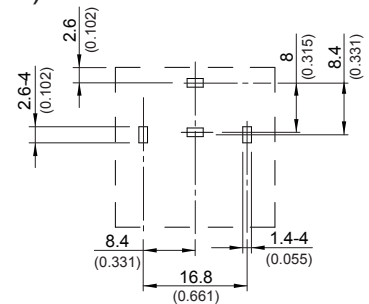
### ■ Wiring Diagram (bottom view)



R1



### ■ PC Board Layout (bottom view)



## Description

Contact rating (Resistive load)	MV002 : 30A 60VDC MV002H : 40A 60VDC
Coil voltage	12~48VDC
Power consumption	Approx. 1.6W
Contact material	Ag alloy
Contact voltage drop <sup>(1)</sup>	Typ. 50 mV at 10A
Operate time <sup>(1)</sup>	20ms Max.
Release time <sup>(1)</sup>	20ms Max.
Insulation resistance <sup>(1)</sup>	20MΩ Min. (DC 500V)
Dielectric strength <sup>(1)</sup>	Between open contact : AC 750V, 50/60Hz 1 min. Between contact and coil : AC 750V, 50/60Hz 1 min.
Life expectancy	Mechanical : 1,000,000 ops. (frequency 9,000 ops./hr.) Electrical : 10,000 ops. (frequency 600 ops./hr.)
Operating ambient temperature	-40~+85° C (no freezing)
Weight	Approx. 40 g

- \*Note : (1) Initial value. Operate and release time excluding contact bounce.  
 (2) Consider the heat of PCB is necessary with actual application.  
 (3) Please contact Song Chuan for the detailed information.

### Disclaimer

All technical performance data apply to the relay as such, specific conditions of the individual application are not considered. Please always check the suitability of the relay for your intended purpose. We do not assume any responsibility or liability for not complying herewith. We recommend to complete our questionnaire and to request our technical service. Any responsibility for the application of the product remains with the customer only. All specifications are subject to change without notification. All rights of Song Chuan are reserved .