



# SCLA

## »» Features



- 15A general purpose Power Relays.
- UL/CUL, CSA, TUV approved.
- Optional for AC & DC coil.
- Optional with and or w/out lamp, push-to-test button, stud etc.
- Sealed and washable type w/ knock-off nib vent.
- Plain or top flange cover, PCB or solder lug / quick terminals.
- Contact rating up to 15A 250VAC (SPNO)
- Comply with RoHS Directive 2011/65/EU.



## »» Type List

Terminal style	Contact form	Designation (provided with)	Enclosure style	
			Dust cover	Flanged cover
S (Quick terminal)	1C (SPDT)	-----	SCLA-S-SPDT-C	SCLA-S-SPDT-C1
	1A (SPNO)		SCLA-S-SPNO-C	SCLA-S-SPNO-C1
	1B (SPNC)		SCLA-S-SPNC-C	SCLA-S-SPNC-C1
	1C (SPDT)	Lamp	SCLA-S-L-SPDT-C	SCLA-S-L-SPDT-C1
	1A (SPNO)		SCLA-S-L-SPNO-C	SCLA-S-L-SPNO-C1
	1B (SPNC)		SCLA-S-L-SPNC-C	SCLA-S-L-SPNC-C1
	1C (SPDT)	Manual	SCLA-S-M-SPDT-C	SCLA-S-M-SPDT-C1
	1A (SPNO)		SCLA-S-M-SPNO-C	SCLA-S-M-SPNO-C1
	1B (SPNC)		SCLA-S-M-SPNC-C	SCLA-S-M-SPNC-C1
	1C (SPDT)	Lamp & Manual	SCLA-S-LM-SPDT-C	SCLA-S-LM-SPDT-C1
	1A (SPNO)		SCLA-S-LM-SPNO-C	SCLA-S-LM-SPNO-C1
	1B (SPNC)		SCLA-S-LM-SPNC-C	SCLA-S-LM-SPNC-C1
P (PCBterminal)	1C (SPDT)	-----	SCLA-P-SPDT-C	-----
	1A (SPNO)		SCLA-P-SPNO-C	-----
	1B (SPNC)		SCLA-P-SPNC-C	-----
	1C (SPDT)	Lamp	SCLA-P-L-SPDT-C	-----
	1A (SPNO)		SCLA-P-L-SPNO-C	-----
	1B (SPNC)		SCLA-P-L-SPNC-C	-----
	1C (SPDT)	Manual	SCLA-P-M-SPDT-C	-----
	1A (SPNO)		SCLA-P-M-SPNO-C	-----
	1B (SPNC)		SCLA-P-M-SPNC-C	-----
	1C (SPDT)	Lamp & Manual	SCLA-P-LM-SPDT-C	-----
	1A (SPNO)		SCLA-P-LM-SPNO-C	-----
	1B (SPNC)		SCLA-P-LM-SPNC-C	-----

## »» Ordering Information

SCL A - S - L - SPNO - F - C XXVXC  
 1 2 3 4 5 6 7 8

- |   |   |
|---|---|
| 1. SCL -- Basic series designation  | 5. SPNO -- Single pole normally open<br>SPNC -- Single pole normally closed<br>SPDT -- Single pole double throw |
| 2. A -- Single pole   |   |
| 3. P -- PCB terminal<br>S -- Quick terminal   | 6. Blank -- Standard type<br>F -- Class F   |
| 4. Blank -- Without pilot light<br>L -- Provided with pilot light<br>M -- Provided with manual operator | 7. C -- Dust cover<br>C1 -- Flanged cover   |
|   | 8. XXVXC -- Coil voltage (please refer to the coil rating data for the availability).                           |

## »» Contact Rating

Resistive load	15A 240VCA	15A 28VDC
----------------	------------	-----------

## »» Coil Rating (DC)

Rated voltage (V)	Rated current ±10% at 23°C (mA)	Coil resistance ±10% at 23°C (Ω)	Max. continuous voltage at 70°C	Pick up voltage (Max) at 23°C	Drop out voltage (Min) at 23°C	Power consumption at rated voltage
6	150	40	120 % of rated voltage	75 % of rated voltage	10 % of rated voltage	approx. 0.9W
12	75	160				
15	60	250				
24	37	650				
48	19	2600				
110	10	11000				
120	11	11000				

## »» Coil Rating (AC)

Rated voltage (V)	Coil resistance ±10% at 23°C (Ω)	Max. continuous voltage at 70°C	Pick up voltage (Max) at 23°C	Drop out voltage (Min) at 23°C	Power consumption at rated voltage
12	40	110 % of rated voltage	85 % of rated voltage	30 % of rated voltage	approx. 1.2VA
24	160				
100	3400				
110	3400				
115	3400				



# SCLA

120	3400	110 % of rated voltage	85 % of rated voltage	30 % of rated voltage	approx. 1.2VA
220	13600				
230	13600				
240	13600				

## »» Specification

Contact material	AgSnO alloy	
Contact resistance <sup>(1)</sup>	30 mΩ Max.	
Operate time <sup>(1)</sup>	25 ms Max.	
Release time <sup>(1)</sup>	25 ms Max.	
Insulation resistance <sup>(1)</sup>	100 MΩ Min.(DC 500V)	
Dielectric strength <sup>(1)</sup>	Between live parts & ground : AC 1500V, 50/60Hz 1min.	
	Between contact and coil : AC 1500V, 50/60Hz 1min.	
	Between open contact : AC 1500V, 50/60Hz 1min.	
Vibration resistance	Operating extremes	10 ~ 55Hz, amplitude 1.0 mm
	Damage limits	10 ~ 55Hz, amplitude 1.0 mm
Shock resistance	Operating extremes	20G
	Damage limits	100G
Life expectancy	Mechanical	10,000,000 operations (frequency 18,000 operations/hr)
	Electrical	100,000 operations (frequency 18,000 operations/hr)
Operating ambient temperature	-25~+70°C (no freezing)	
Weight	Approx. 32 g	

Note : (1) initial value

## »» Safety Approval

Certified	UL / CUL	CSA	TUV
File No.	E8899	1474292	R9452081

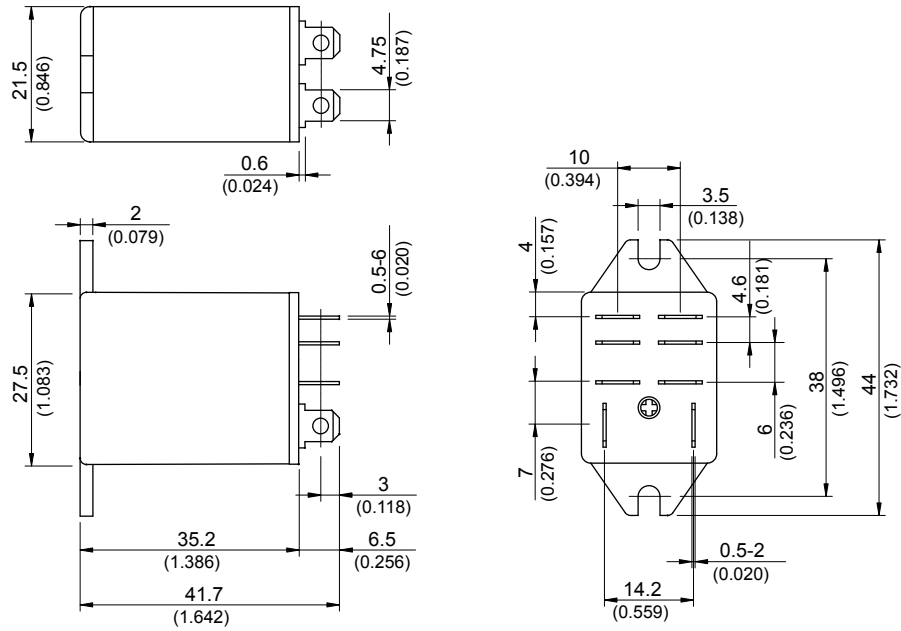
## »» Safety Approval Rating

UL / CUL	CSA	TUV
15A 277VAC (※)	10A 277VAC	15A 250VAC
18A 120VAC (※)	15A 28VDC	15A 30VDC
15A 120VAC	15A, 1/2HP 120VAC	6.2A 120VAC cos φ 0.5
10A 277VAC		
15A 28VDC		
1/2HP 120VAC		

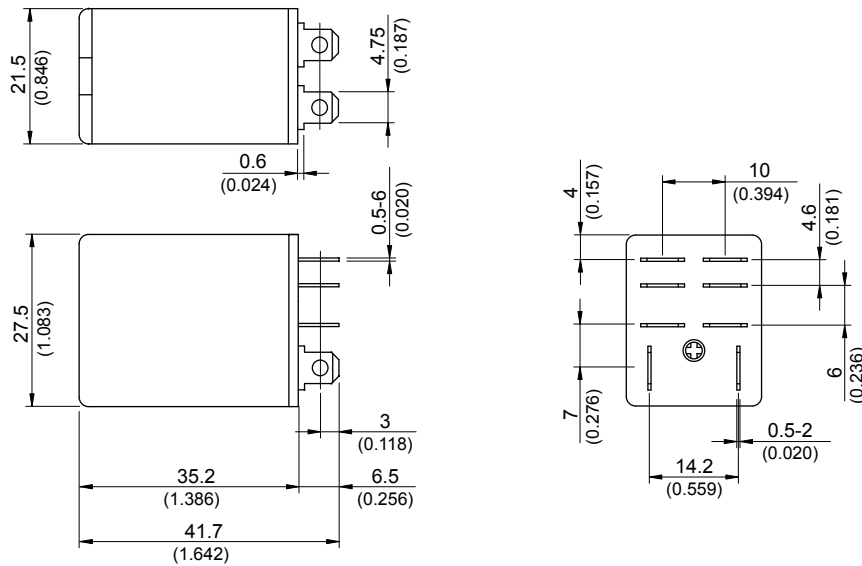
Note : (※) For non industrial application.

## »» Outline Dimensions

### ◆LA-S C1



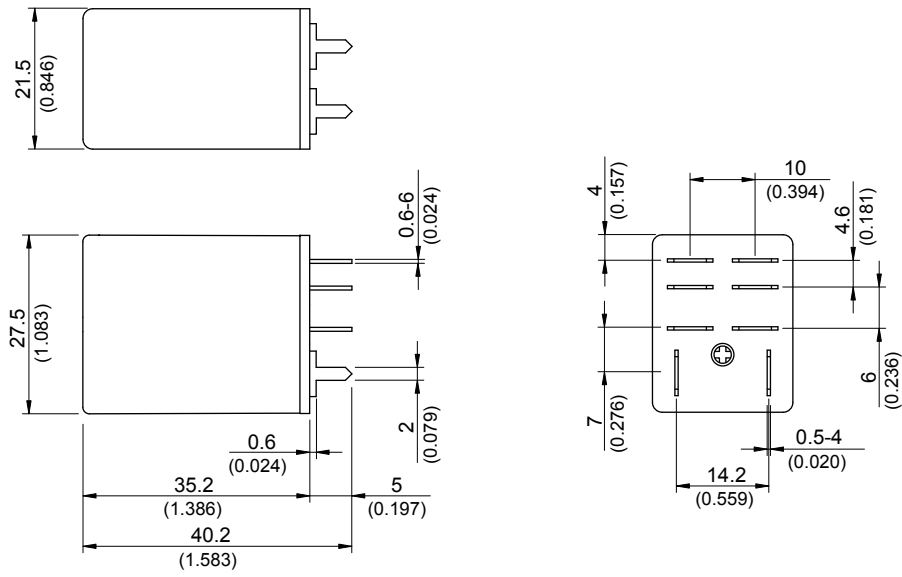
### ◆LA-S C



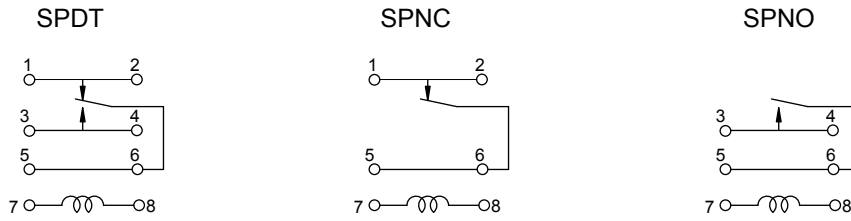


# SCLA

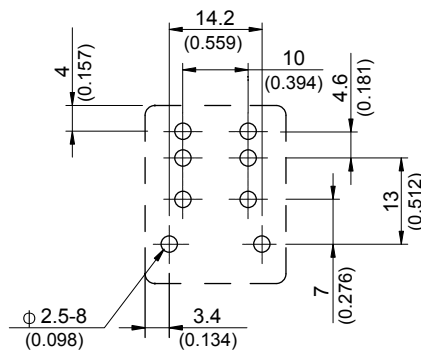
◆LA-P C



»» Wiring Diagram  
BOTTOM VIEW

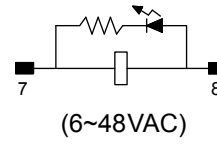
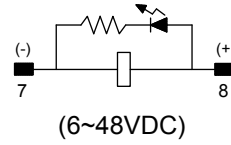
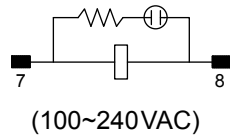


»» PC Board Layout  
BOTTOM VIEW

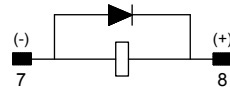


## »» Designation (Provided with) BOTTOM VIEW

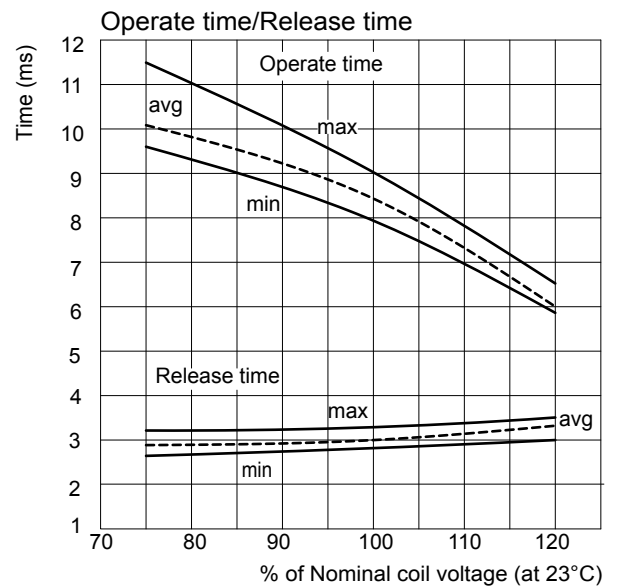
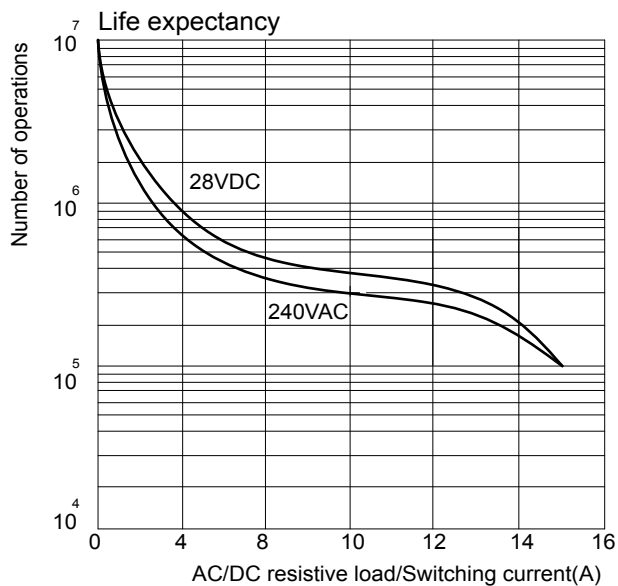
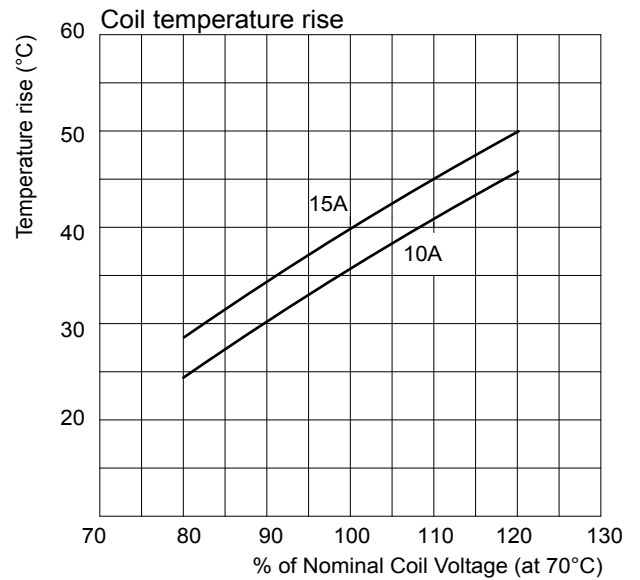
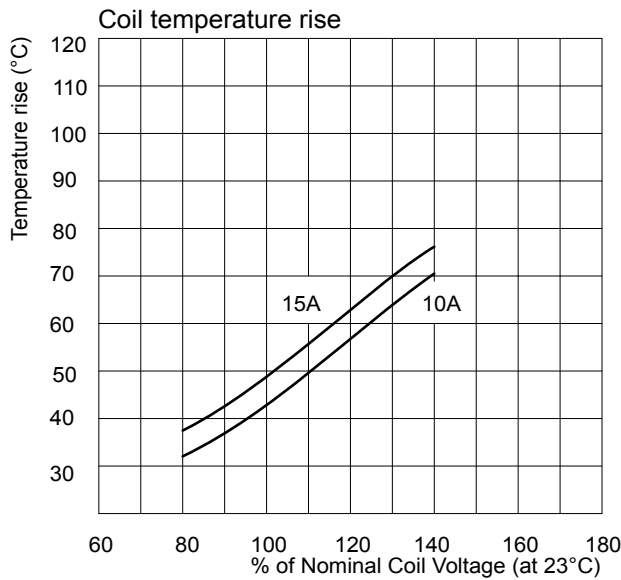
Lamp



Diode



## »» Engineering Data



### Disclaimer

All technical performance data apply to the relay as such, specific conditions of the individual application are not considered. Please always check the suitability of the relay for your intended purpose. We do not assume any responsibility or liability for not complying herewith. We recommend to complete our questionnaire and to request our technical service. Any responsibility for the application of the product remains with the customer only. All specifications are subject to change without notification. All rights of Song Chuan are reserved.