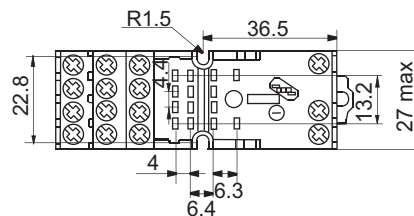
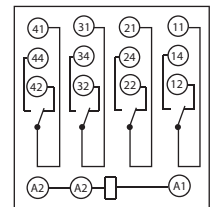
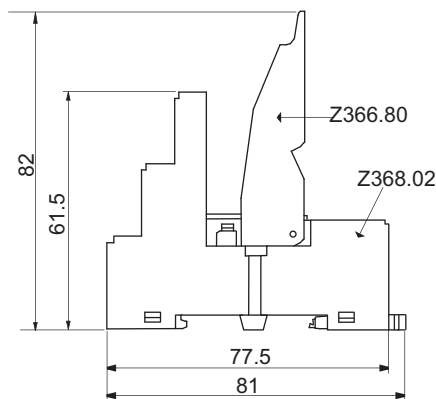


DIN-rail socket and accessories For miniature 4 pole relay

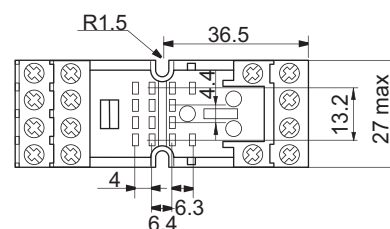
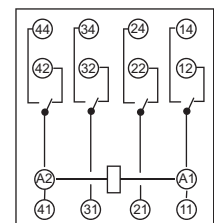
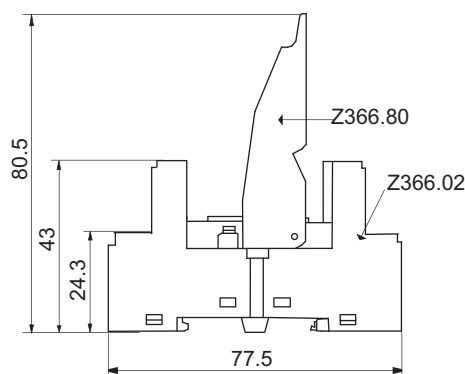
»» Features

- Protection group C250 (VDE 0110b/2)
- Sockets for 35mm DIN rail mount or screw mounting
- Rising clamp terminals
- Accessories: retaining clip, writing plates, modules
- Sockets and accessories comply with RoHS-Directive 2002/95/EC

Z368.02 socket for 4pole 305 with screw connection, logical



Z366.02 socket for 4pole 305 with screw connection

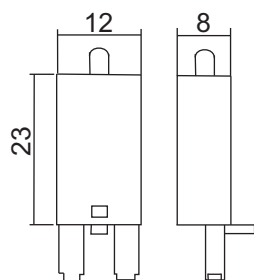


Technical data

Sockets with screw terminals for DIN-rail mounting	
Rated current	10A
Rated voltage	300VAC
Dielectric strength coil / contact	2500VAC
Dielectric strength open contact circuit	1200VAC
Dielectric strength adjacent contact circuits	2500VAC
Insulation category acc. VDE0110b/2.79	C250
Ambient temperature	-40 ..+70°C
Terminal protection degree according to EN60529	IP20
Terminal capacity	2 x 2.5 mm ²
Terminal capacity with cable end	2 x 1.5 mm ²
Maximum torque	0.7Nm
Screw type	Combination of slotted and Phillips head screw M3
Packaging unit sockets	10 pcs
Packaging unit retaining clips	10 pcs
Packaging unit modules	20 pcs
Approvals	CUL

Standard part numbers

DIN rail socket - logical	Z368.02
DIN rail socket	Z366.02
Plastic retaining clip	Z366.80
Writing plate - supplied with socket	SK4P
Protection diode (+ A1)	Z318.53
Protection diode (+ A2)	Z318.50
Green LED + protection diode 6/24VDC (+ A1)	Z318.51
Red LED + protection diode 6/24VDC (+ A1)	Z318.51R
Green LED 6..24V AC/DC (+ A1)	Z318.52
Red LED 6..24V AC/DC (+ A1)	Z318.52R
Green LED + protection diode 6/24VDC (+ A2)	Z318.57
Red LED + protection diode 6/24VDC (+ A2)	Z318.57R
Green LED 110..230V AC/DC (+ A1)	Z318.58
Red LED 110..230V AC/DC (+ A1)	Z318.58R
Varistor 24VAC	Z318.54
Varistor 230VAC	Z318.55



Module Z318.5x



Clip Z366.80