



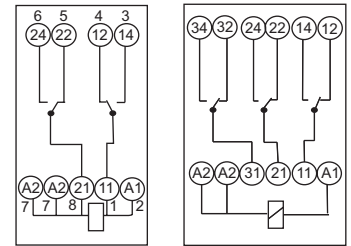
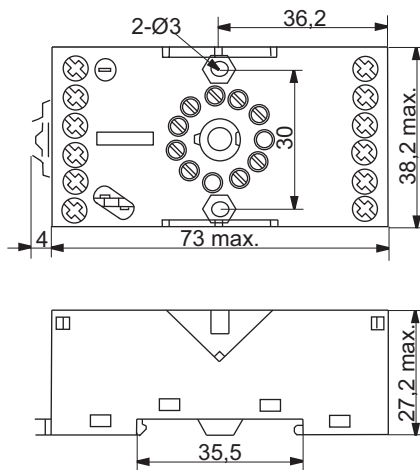
205

DIN-rail socket and accessories For miniature 205 relay

»» Features

- Protection group C250 (VDE 0110b/2)
- Sockets for 35mm DIN rail mount or screw mounting
- Rising clamp terminals
- Accessories: Z395 & Z396 : timer, modules, retaining spring
Z392.01 & Z393.01 : retaining spring
- Sockets and accessories comply with RoHS-Directive 2002/95/EC

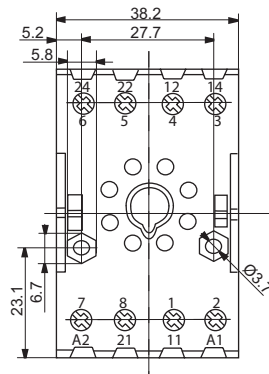
Z395 & Z396 sockets for 2&3 pole 205 with screw connection, with module-slot



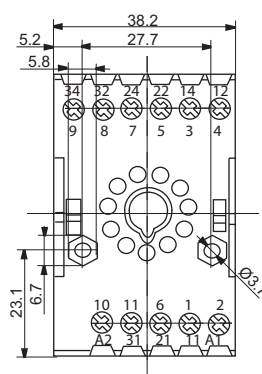
Z395

Z396

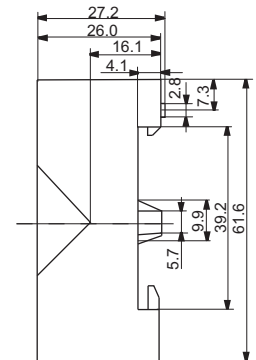
Z392.01 & Z393.01 sockets for 2 & 3 pole 205 with screw connection, without module-slot



Z392.01



Z393.01



Technical data

Electrical / mechanical Data	Z395 & Z396	Z392.01 & Z393.01
Rated current	12A	12A
Rated voltage	300VAC	300VAC
Dielectric strength coil to contact circuits	2500VAC	2500VAC
Dielectric strength open contact circuits	1500VAC	1500VAC
Dielectric strength adjacent contact circuits	2500VAC	2500VAC
Insulation category acc. VDE0110b/2.79	C250/B380	C250
Ambient temperature	-40 ... +80°C	-25 ... +70°C
Protection category acc. EN60529	IP20	IP20
Terminal capacity	2 x 2.5 mm ²	2 x 2.5 mm ²
Terminal capacity with cable end	2 x 1.5 mm ²	2 x 1.5 mm ²
Maximum torque	0.8Nm	0.7Nm
Screw type	Combi screw M3*	Pozidrive screw M3
Packaging unit sockets	10 pcs.	10 pcs.
Packaging unit modules	20 pcs.	-
Packaging unit retaining clips	10 pcs.	10 pcs.
Approvals	CUL (pending)	CUL

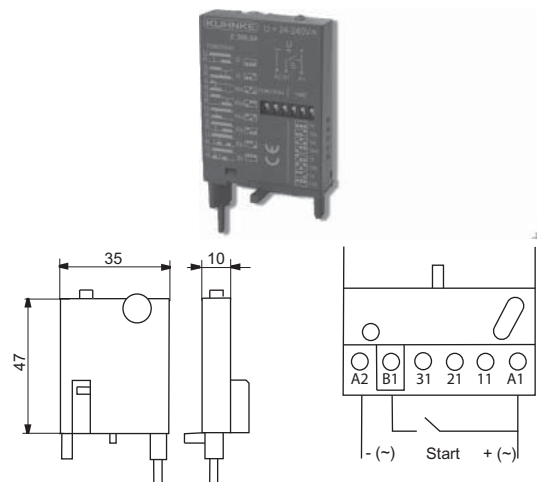
(*) Combination of slotted and Phillips head screw M3

Standard part numbers	
DIN rail socket for 2 pole without module-slot	Z392.01
DIN rail socket for 3 pole without module-slot	Z393.01
DIN rail socket for 2 pole relay with module-slot	Z395
DIN rail socket for 3 pole relay with module-slot	Z396
Metallic retaining clip	Z434
Protection diode (+ A1)	Z396.50
Red LED + protection diode 6/24VDC (+ A1)	Z396.52
RC protection 110..240VAC	Z396.53
Varistor protection 24VAC	Z396.54
Varistor protection 230VAC	Z396.55
Red LED 230VAC	Z396.58
Timer Module with 8 functions Time from 50ms to 240h voltage from 24 to 240V AC/DC	Z396.64



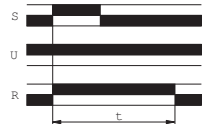

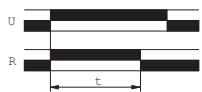
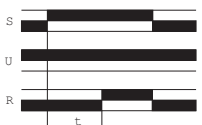

Universal Timer Module Z396.64 for socket Z396

- ☒ Multi voltage of 24 - 240VDC/AC
- ☒ Multi-functional with 8 functions
- ☒ Multi range from 50ms - 240h

Time ranges, time range limit	Adjustment range
1 s	0.05s - 1s
10 s	0.5s - 10s
1 min	3s - 60s
10 min	30s - 600s
1 h	3min - 60min
10 h	30min - 600min
1 day / 24 h	1,2h - 24h
10 days / 240 h	12h - 240h



General data	
Voltage range supply	24V to 240VAC, 24 to 250VDC -15% to +10% in relation to rated voltage
Voltage range control contact	at 24V min. 80% of supply voltage at 230V min. 95% of supply voltage
Duty cycle	100%
Frequency	48Hz to 63Hz
Power failure bridging time	max. 10ms
Recovery time	Max. 100ms at 25°C, max. 150ms at 55°C
Adjustments	Time ranges and functions selectable via DIP switch Time setting via potentiometer
Temperature range	-25°C to +55°C
Indicators	Green "Power on" LED Green LED flashes during delay time
Supply voltage terminal	Plug-in to socket Z396

Functions	Z395 & Z396	Z392 & Z393
E	Switch-on delay Start by switching the supply voltage	
R	Switch-off delay Start with control contact	
Ws	Switch-on wiper Start with control contact	
Wa	Switch-off wiper Start with control contact	
Wu	Switch-on wiper Start by switching the supply voltage	
Es	Switch-on delay Start with control contact	
Bp	Blinker 0 – starting Start by switching the supply-voltage	
Bi	Blinker 1 – starting Start by switching the supply voltage	